

GENERAL NOTES

1.00 GENERAL

1.01 ALL CONSTRUCTION SHALL CONFORM TO THE INTERNATIONAL BUILDING CODE, 2000 WITH GEORGIA 2005 STATE AMENDMENTS. REFERENCE TO OTHER STANDARD OR CODES SHALL MEAN THE LATEST STANDARD OR CODE ADOPTED AND PUBLISHED.

2.00 DESIGN LOADS

2.01 BASIC WIND SPEED (3 SEC. GUST) = 90 MILES PER HOUR.
 $I = 1.00$
 $EXP. = C$
 ROOF MAIN WIND FORCE: UPLIFT = [CHART WILL BE PROVIDED FOR DIFFERENT ROOF SLOPES]
 COMPONENTS & CLADDING WIND LOAD = [PROVIDED ON A JOB PER JOB BASIS]

3.00 INSTALLATION

3.01 FOR WIND VELOCITY OF 90mph THE 18 GAUGE HAT SECTION IS USED. SEE DETAIL 2.

3.02 FOR WIND VELOCITY OF 95mph TO 135mph THE 16 GAUGE HAT SECTION IS USED. THE HIGH WIND COLLAR IS FASTENED TO THE TOP CHORD AS SHOWN IN STEPS 2,3,4. NAILING PATTERN IS AS SHOWN IN STEP 5 AND DETAILS 2 & 4.

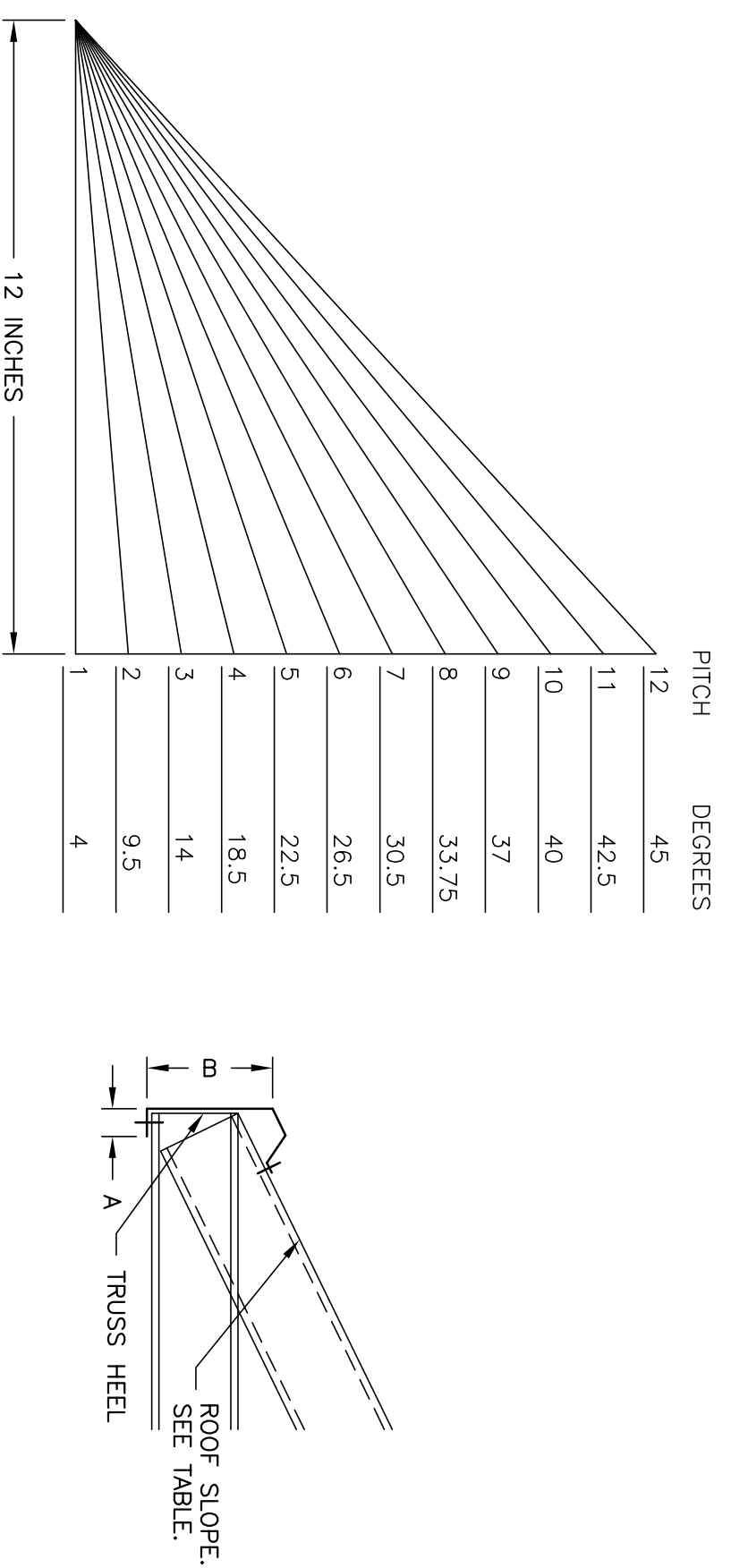
3.03 EAVE GIRT INTERNAL SPLICE IS OPTIONAL.

3.04 FOR HIP ROOF ENDS THE PROFILED SECTION WILL RUN PERPENDICULAR TO STEP DOWN TRUSSES.

3.05 SEE CONTRACTOR CHECKLIST FOR ORDERING INFORMATION.

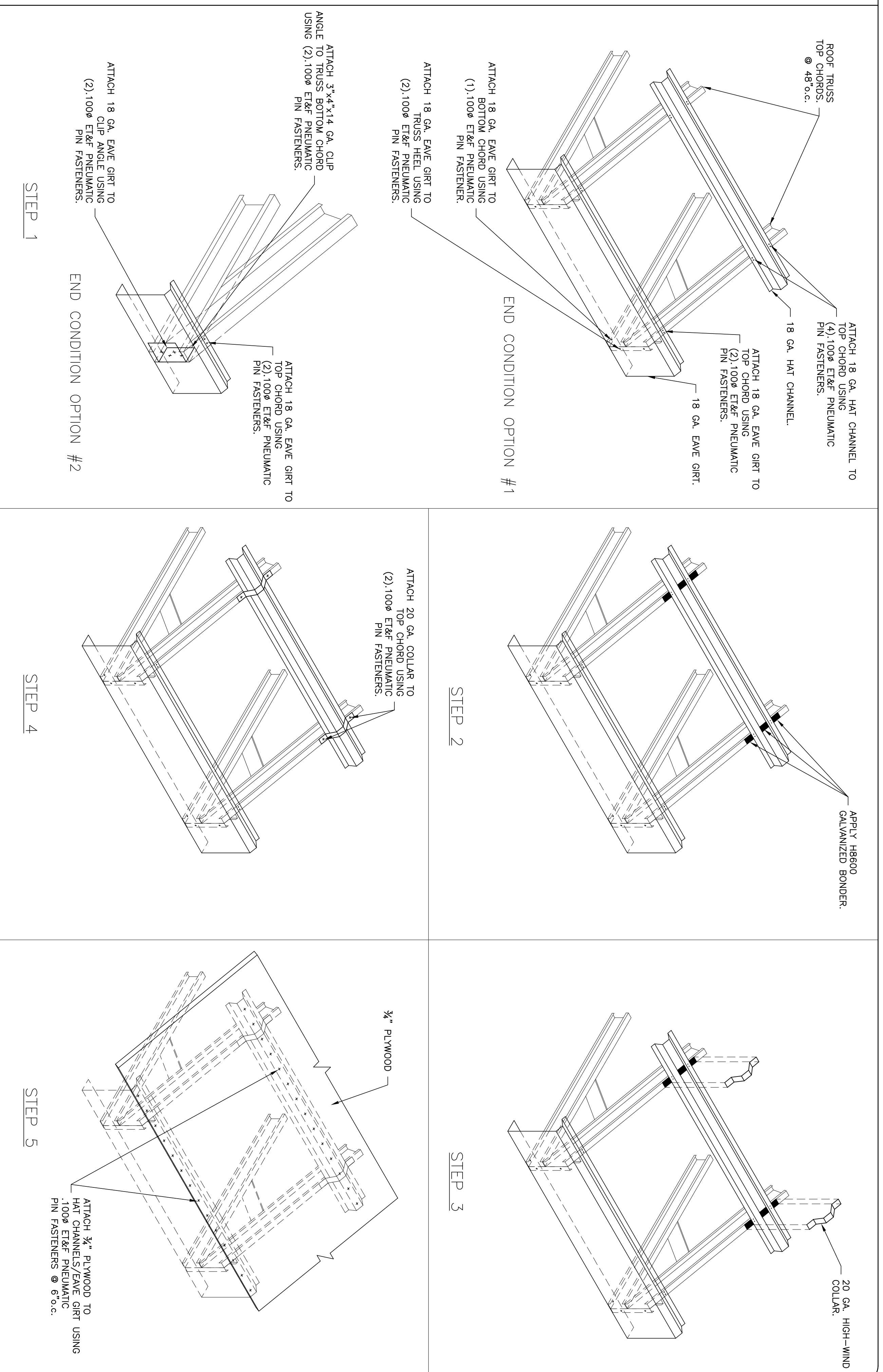
3.06 SPECIFIC ADHESIVE AND FASTENERS HAVE BEEN ANALYZED AND TESTED FOR THE FOURTH GENERATION PRODUCTS ROOF DECK™ SYSTEM. SUBSTITUTIONS ARE NOT PERMITTED AND WILL VOID ALL ENGINEERING DATA.

3.07 HAT CHANNEL SPLICE MUST EXTEND 9" PAST THE TOP CHORD AS SHOWN IN DETAIL 2.

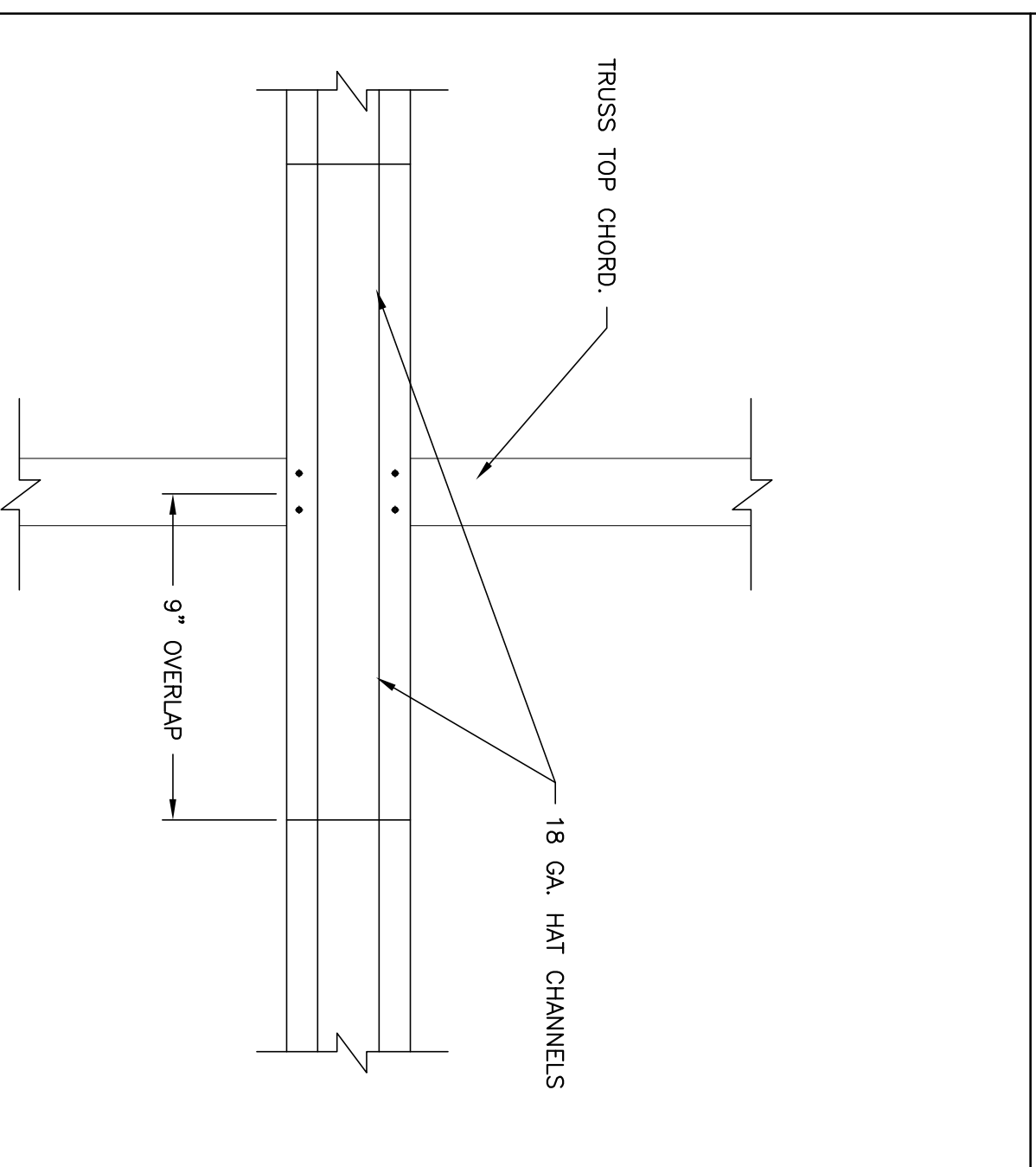


THE FOURTH GENERATION ROOF DECK™ SYSTEM IS A PATENT PENDING SYSTEM.

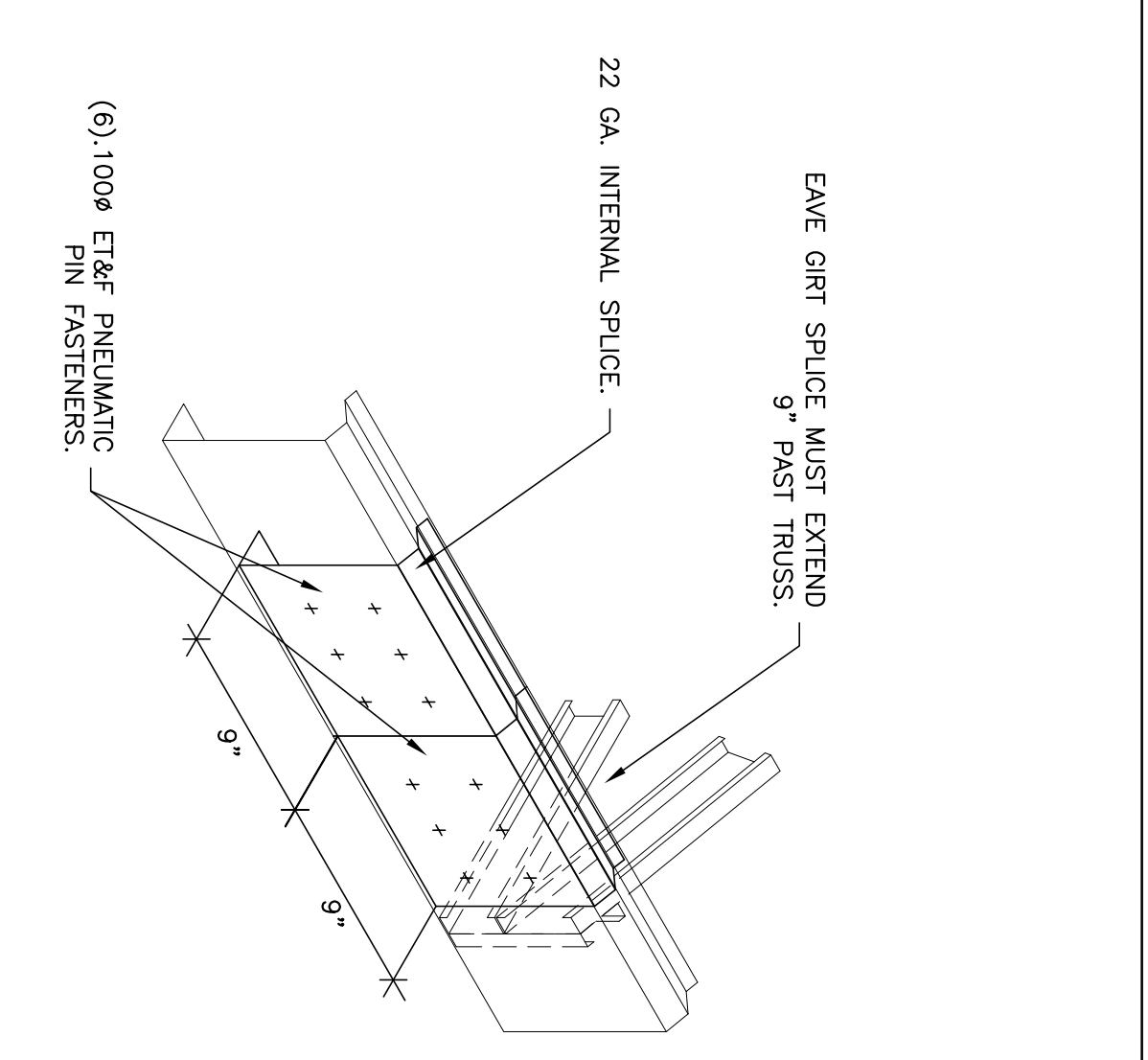
CONFIDENTIAL
 TRADE SECRET - DO NOT DISTRIBUTE.



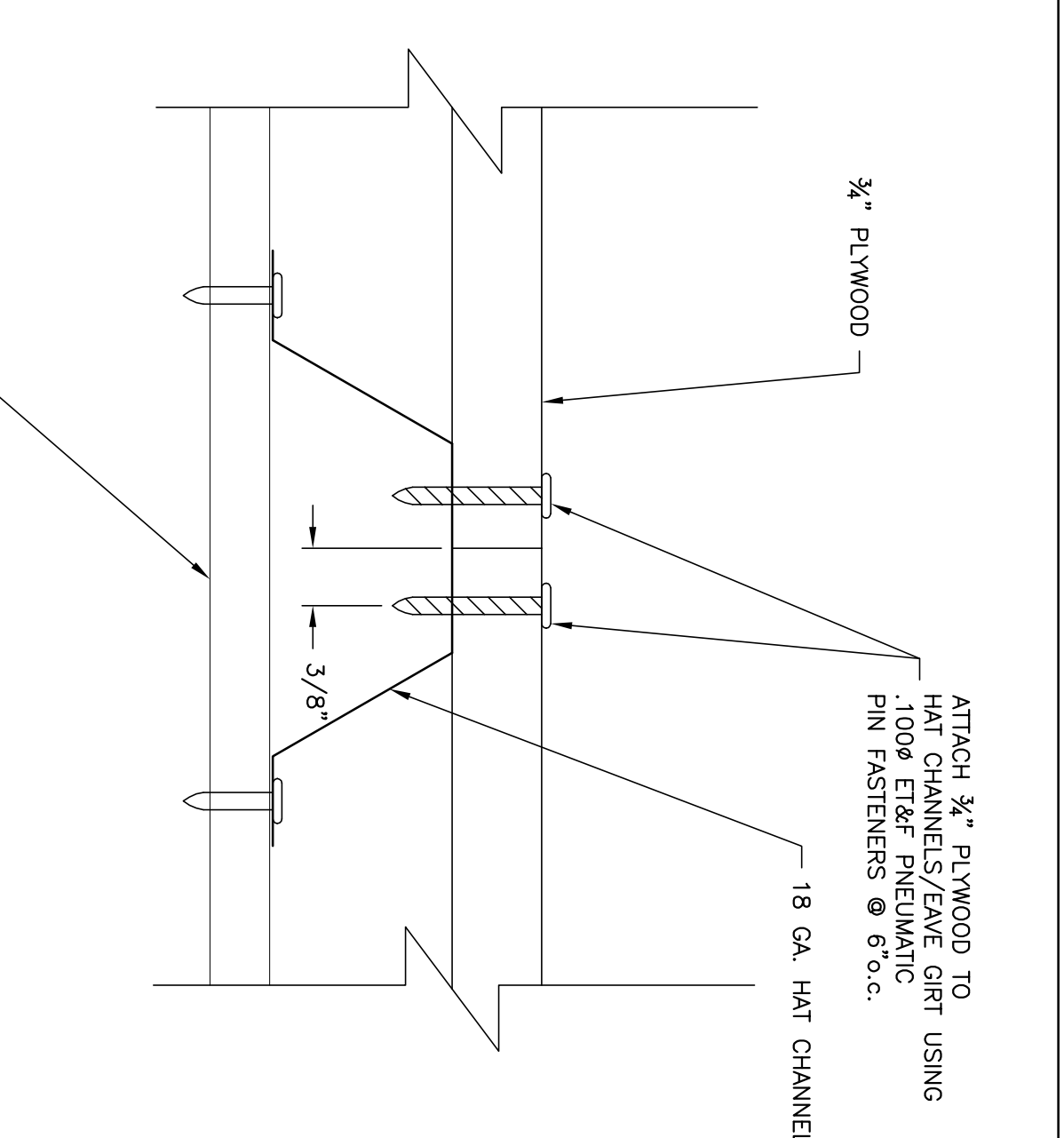
1 TYPICAL INSTALLATION



2 HAT CHANNEL SPLICE



3 EAVE GIRT SPLICE



4 PLYWOOD END CONDITION

FOURTH GENERATION PRODUCTS, LLC
STRUCTURAL ROOF DECK SYSTEM

PREPARED FOR

REVISIONS

Structural Design Inc.
 20 Mansell Court East, Suite 350A tel: 770-642-1811
 Roswell, GA 30076 fax: 678-822-9014
 www.structuraldesigninc.com

INSTALLATION DETAILS

ENGINE: SK	DRAWN: BR: GC
CHECKED: JZ/VJ/XZ	SCALE: N.T.S.
DATE: 01/13/10	
DWG. NUMBER: XXXXXXX	
REV. NUMBER: 1.0	